

GENERAL CHARACTERISTICS

The weir can have hinge adjustment (when it is necessary to control the level with continuous outlet of high flow rates) or gate-style adjustment (when it is necessary to control the level continuously or intermittently).

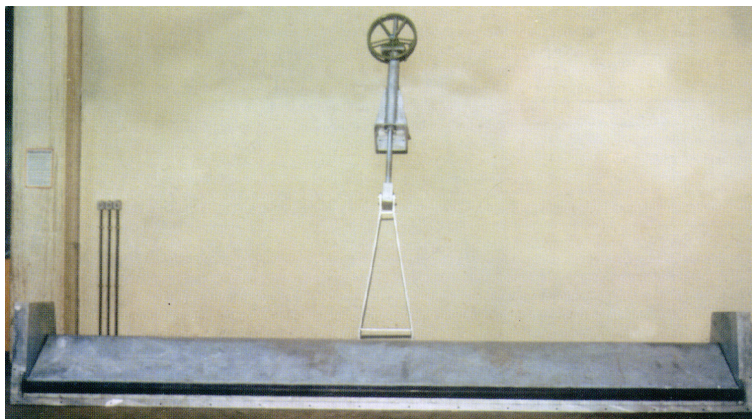
CONSTRUCTIONAL CHARACTERISTICS

- DIAPHRAGM with lateral seals in neoprene;
- FRAME;
- DRIVING ROD with handwheel.

STANDARD CONFIGURATION

- DIAPHRAGM and FRAME made of epoxy coated or hot-galvanized carbon steel sheeting and profiles;
 - ROD in AISI 304 stainless steel;
- Iron HANDWHEEL.

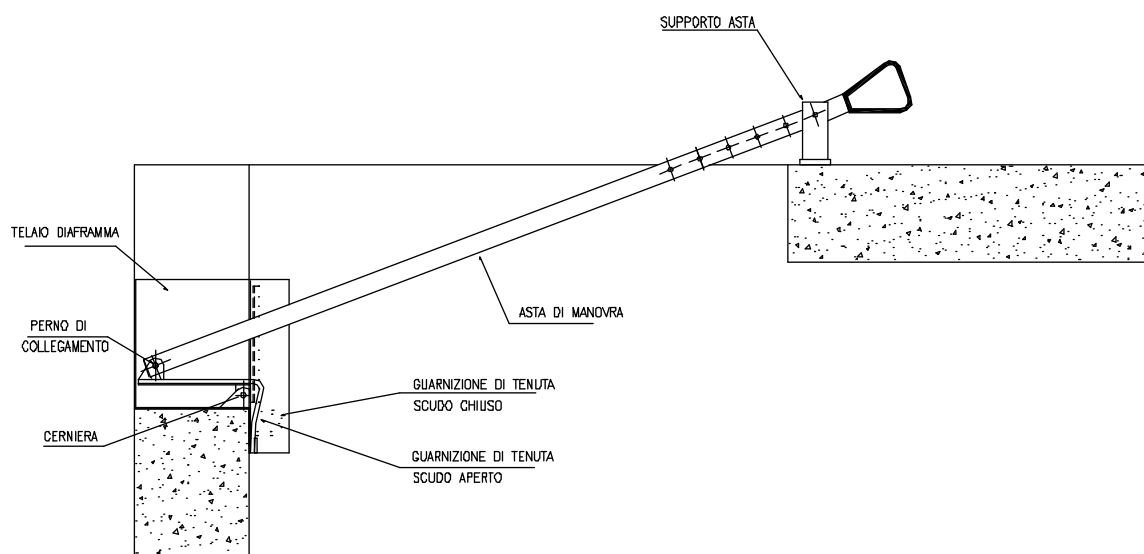
Also available in stainless steel.



OPERATION

Turning the flywheel clockwise or anticlockwise opens the hole as required within the minimum-maximum range.

An actuator can be installed on request to power the weir.



The company reserves the right to make modification and improvements without prior notice.