

MANUAL SLUICE GATE

GENERAL CHARACTERISTICS

The manual sluice gate is used as a cut-off element for channels, storage tanks, underwater holes, pipes, etc.

CONSTRUCTIONAL CHARACTERISTICS

- SLIDING FRAME for the shield, made of AISI 304 stainless steel profiles;
- SHIELD in reinforced AISI 304 stainless steel;
- THRUST wedges attached to the frame and shield;
- RISING TPN screw in AISI 304 stainless steel, hinged on the shield;
- BRONZE nut for the TPN screw incorporated on the handwheel;
- HANDWHEEL for lifting and lowering the shield;
- MUSICAL NOTE type gasket.

STANDARD CONFIGURATION

- FRAME and SHIELD made of AISI 304 stainless steel;
- SLIDING screw in AISI 304 stainless steel;
- Neoprene SEAL;
- HANDWHEEL made of epoxy coated carbon steel.

The sluice gate is available with seals on 3 or 4 sides (pipe).

Also available in carbon steel.

OPERATION

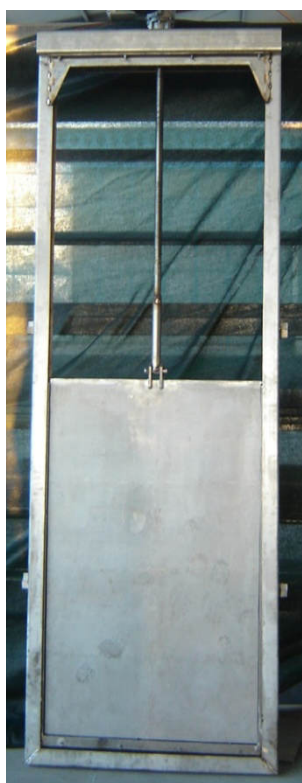
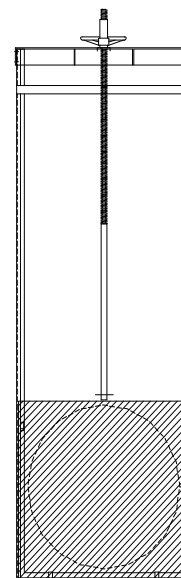
Turning the handwheel at the top of the sluice gate lifts or lowers the shield, opening and closing the channel or hole as required.

The sluice gates are available with seals on three or four sides.

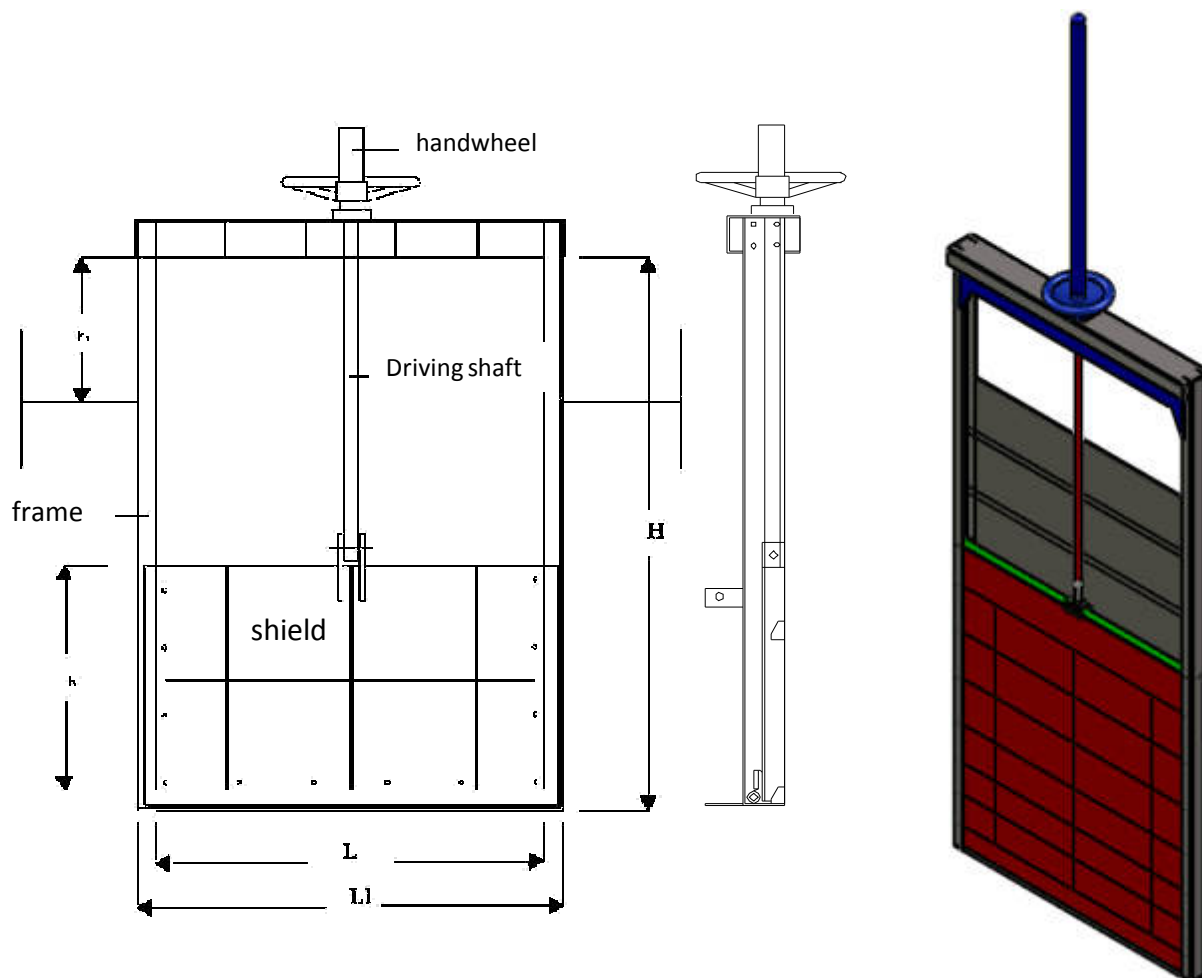
In the case of sluice gates with seals on three sides, a “musical note” type gasket is fitted on the shield with a plate and screws in AISI 304 stainless steel.

In the case of sluice gates with seals on four sides, the “musical note” type gasket is inserted around the circumference of the hole in which the shield is installed, and attached to the frame with a plate and screws in AISI 304 stainless steel.

The seal can be on one or both sides and fitted with a set of wedges on the frame and shield that compress the seal horizontally.



MANUAL SLUICE GATE



Main Features	UNIT	Dimensions
Width (L)	mm	300 - 1000
Width (L1)	mm	L + 300
Height (h)	mm	200 - 1200
Height (h ₁)	mm	1000
Overall height (H)	mm	1200 - 2700
Seal side	n°	1 - 2
Peripheral seal	n°	3/4 lati - 3/4 sides