

PRESS BELT

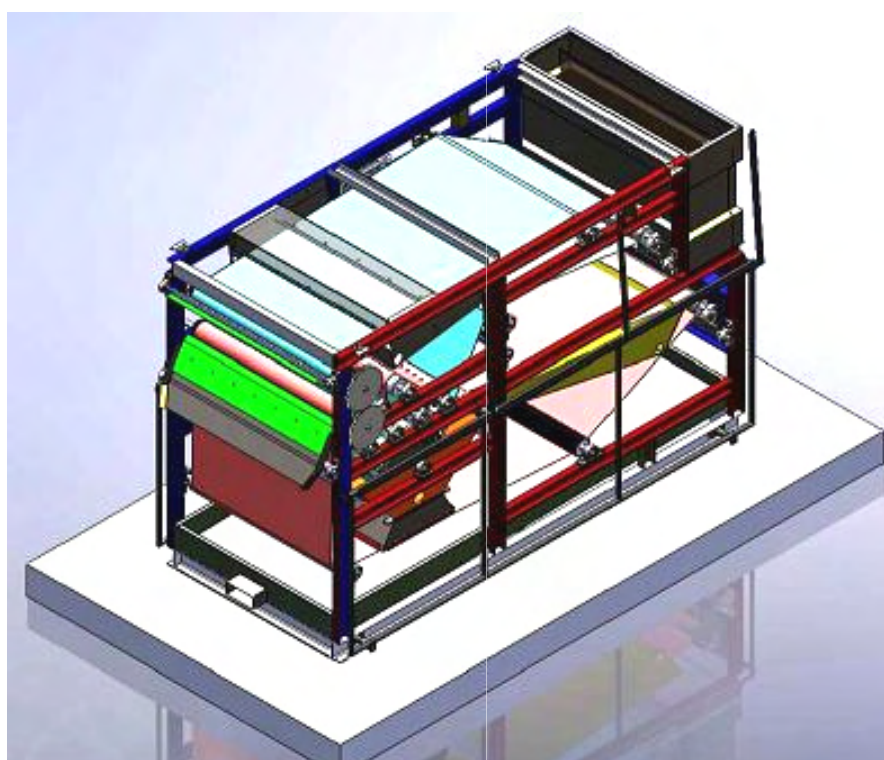
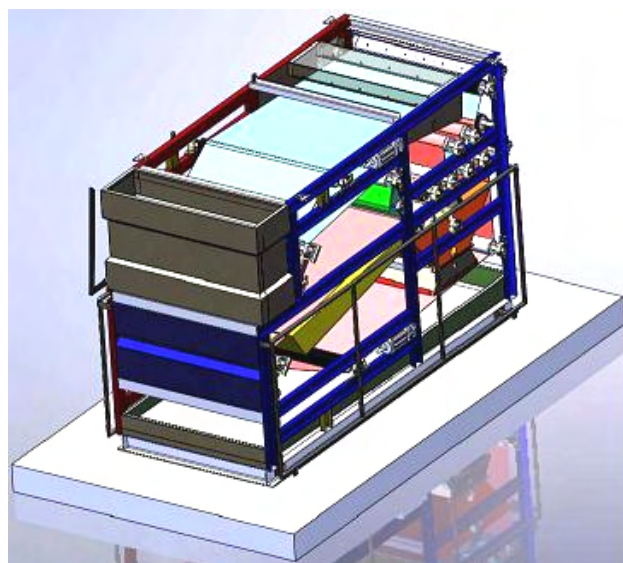
GENERAL CHARACTERISTICS

The NP series of belt presses is intended for small/medium-sized sludge treatment plants. The sludge is distributed evenly on the belt by a baffle of the inlet hopper; it is then pressed by a top belt and suitable roller. On the filtration belt, the sludge comes in contact with the draining roller which is broad and perforated and presses the sludge again lightly. By the end of the process the sludge has been pressed several times, until it is sufficiently dehydrated to be unloaded. The belts are cleaned to remove residual material before they receive other sludge.

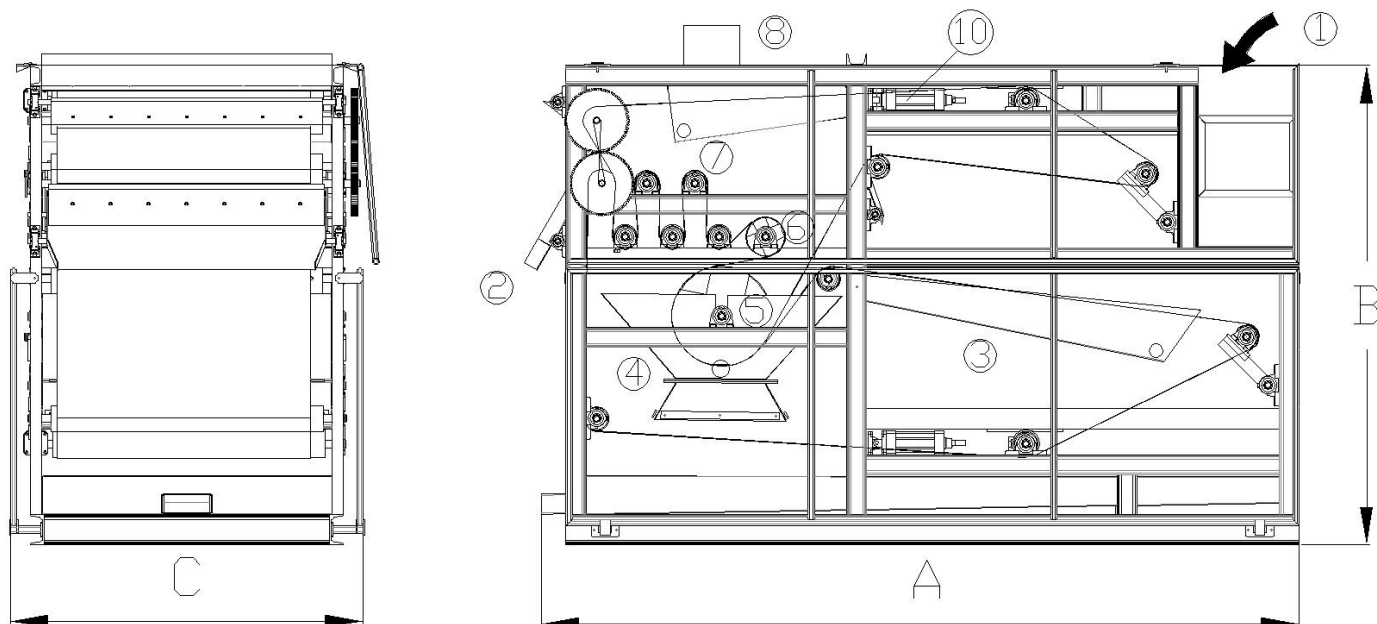
The speed-change drive unit allows you to adjust the speed of the belts according to the type of sludge, for optimal drying.

CONSTRUCTIONAL CHARACTERISTICS

- FRAME made of hot-galvanized steel;
- TANKS for storing and unloading filtered water;
- PROTECTION DEVICES in AISI 304 steel;
- DRAINING, pressure, belt pulling, belt alignment and return rollers, all made of AISI 304 steel.
- RUBBER COATED AISI 304 steel drive rollers
- MECHANICAL speed-change drive unit
- WASHING SYSTEM for cleaning the belts, with easy-to-remove nozzles.



PRESS BELT

**LEGEND**

- | | |
|--------------------------|-----------------------------------|
| 1) SLUDGE INLET | 6) MEDIUM PRESSURE ROLLER |
| 2) SLUDGE OUTLET | 7) HIGH PRESSURE ROLLER |
| 3) FILTRATE TANK | 8) WASHING SYSTEM FOR TOP BELT |
| 4) INITIAL FILTRATE TANK | 9) WASHING SYSTEM FOR BOTTOM BELT |
| 5) PERFORATED ROLLER | 10) BELT ALIGNMENT DEVICE |

Main Features**UNIT****Dimensions**

MODELS		NP 800	NP 1000	NP 1200
Wide belts	mm	800	1000	1200
Length A	mm	3000		
Height B	mm	2200		
Width C	mm	1350	1500	1700
Discharge height	mm	1100		
Mud flow input	m ²	3-5	5-7	7-10
Scope of dry input	%	1,5 - 6		
Reach out to dry	%	17 - 24		
Power (including centrifugal pump)	Kw	4,5	4,5	5,5

The company reserves the right to make modification and improvements without prior notice.



**MECCANICHE
ITALIANE**

Via delle Valli 35/A - 04011 Aprilia (LT) ITALY
Tel.: 06.9271664 E-mail: info@officinemeccanicheitaliane.it
www.meccanicheitaliane.it

