

HYDRAULIC SCREEN

GENERAL CHARACTERISTICS

The Hydraulic screen can be installed in medium and large-sized purification plants for civil and/or industrial waste water.

CONSTRUCTIONAL CHARACTERISTICS

- **STRUCTURE** made of press-formed steel sheeting and profiles;
- **FILTER SCREEN** consisting of appropriately sized bars plasma cut at high definition;
- **POWERED** by a double-acting oil hydraulic piston, with one or more extensions, made of special steel and connected at the end to the sliding trolley;
- **CLEANING** of the screen by a single-component steel comb of appropriate profile fitted on the sliding trolley and powered by a secondary piston;
- **SPAN** between 15 and 100 mm.

STANDARD CONFIGURATION

DEDICATED MECHANISM made of stainless steel and resistant to extreme conditions.

OPERATION

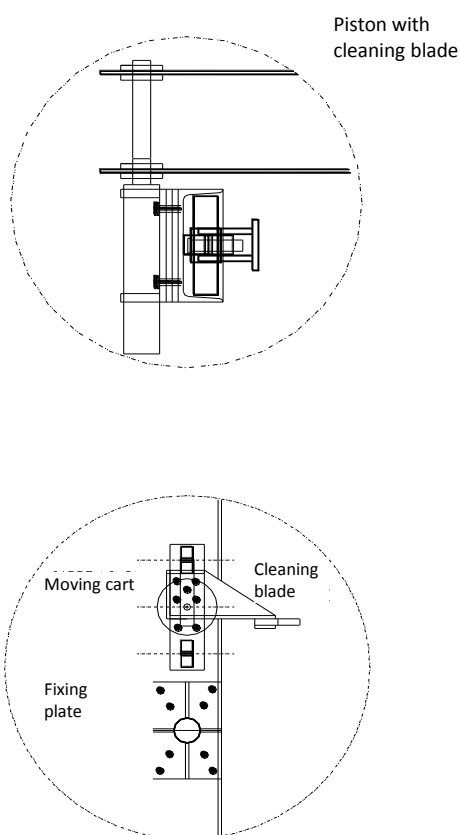
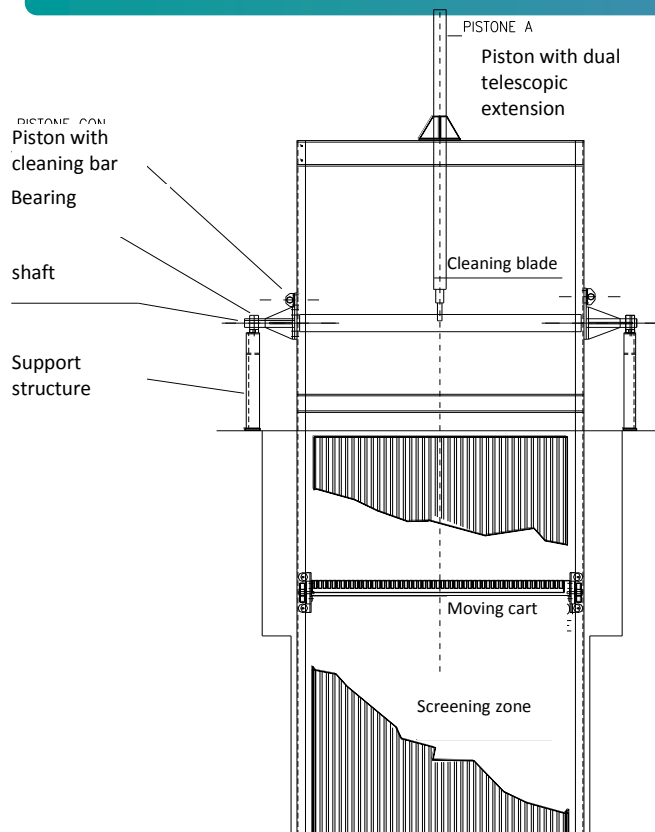
The main piston lowers the trolley down to the bottom of its stroke and a second piston moves the cleaning comb, inserting it in the screen.

The main piston then moves the trolley upwards, conveying the screened material to the top of the screen where the comb cleaning blade intersects with the movement of the trolley and cleans the comb in preparation for a new screening cycle.

This operation is timed and the screen can also be operated manually at the control panel.



HYDRAULIC SCREEN



Main Features

UNIT

Dimensions

Channel width (W)	mm	1000 ÷ 5500
Channel height (h)	Mm	800 ÷ 5000
Screened outlet height (h _s)	mm	1600 ÷ 5800
Screen gaps (s)	mm	15 ÷ 100
Angle on the vertical	gradi	0 ÷ 60
Power	kW	0,5 ÷ 5
Weight	kg	220 ÷ 3700

The company reserves the right to make modification and improvements without prior notice.